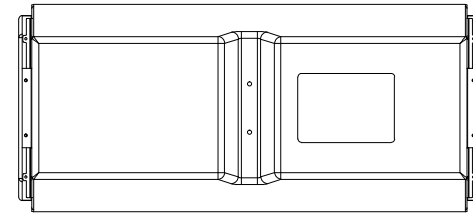
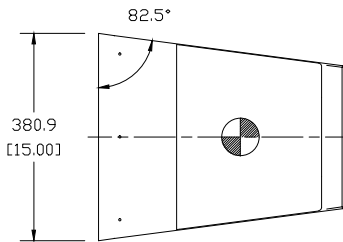
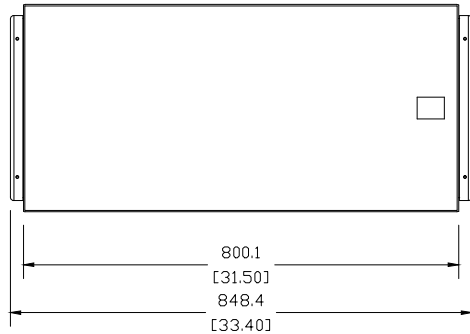
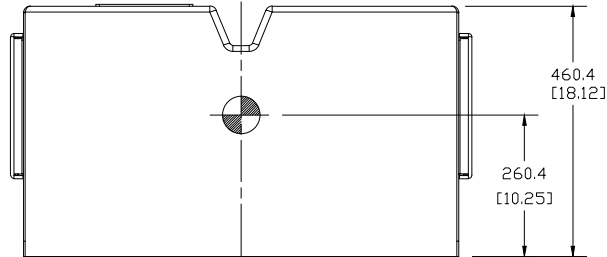


THESE DRAWINGS AND SPECIFICATIONS ARE THE PROPERTY OF JBL INCORPORATED. THEY ARE ISSUED IN STRICT CONFIDENCE AND SHALL NOT BE REPRODUCED OR USED AS THE BASIS FOR MANUFACTURE OR APPARATUS WITHOUT WRITTEN PERMISSION.

REVISIONS						
CHG	LTR	DESCRIPTION	DRFT	D.C	DATE	APPR
	A	RELEASE TO MARKETING	A			



1. COMPONENTS: LF: 2X 2261FF ; HF-3X D2415
2. INPUT CONNECTORS: 2 TERMINAL BARRIER STRIP.
3. GRILL: 16 GA. PERFORATED CRS, POWDERCOATED, GRAY CLOTH BACKING.
4. MATERIALS: FIBER GLASS.
5. FINISH: GELCOAT
6. SUSPENSION POINTS: 6X M10 PER SIDE.
7. WEIGHT: 37.7 kg (83 LBS)

⑧ CENTER OF GRAVITY (CG)

NOTES: (UNLESS OTHERWISE SPECIFIED)

TOLERANCES
(UNLESS OTHERWISE SPECIFIED)

XXX ± .063 INCH
XX ± .125 INCH
ANGULAR TOLERANCE OF 0°±30'
FRACTIONAL DIMENSIONS ± 1/32
* DIMENSIONS ARE INCHES
* ALL DIMENSIONS ARE FINISHED DIMENSIONS
* DO NOT SCALE DRAWING

JBL JBL PROFESSIONAL
A Harman International Company
Northridge, California 91329 U.S.A.

TITLE
CUSTOMER DWG
VLA-C2100

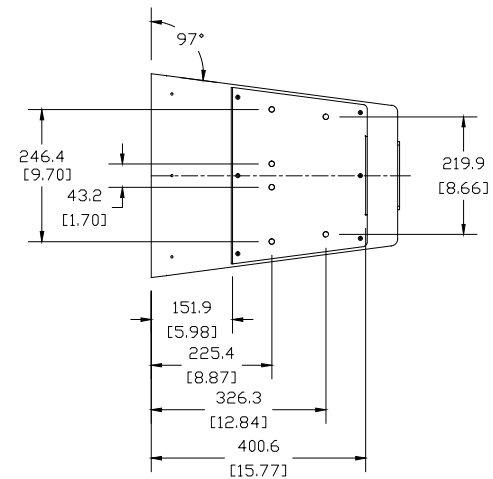
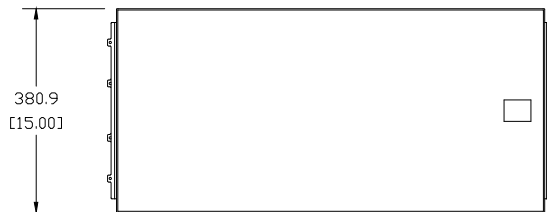
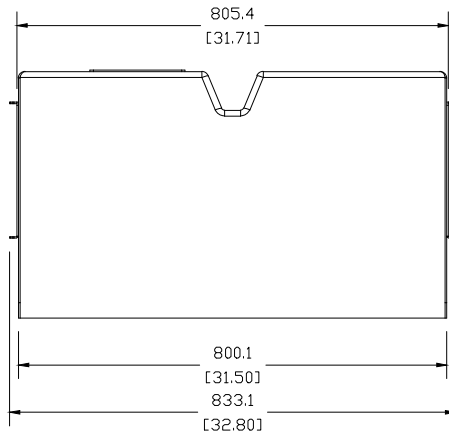
SIZE **A** DRAWING NO. **1000322286** REV **A**

SCALE **NTS** SHEET **1** OF **3**


THESE DRAWINGS AND SPECIFICATIONS ARE THE PROPERTY OF JBL INCORPORATED. THEY ARE ISSUED IN STRICT CONFIDENCE AND SHALL NOT BE REPRODUCED OR USED AS THE BASIS FOR MANUFACTURE OR APPARATUS WITHOUT WRITTEN PERMISSION.

REVISIONS						
CHG	LTR	DESCRIPTION	DRPT	D.C	DATE	APPR
	A	RELEASE TO MARKETING	A			

SHOWN WITHOUT SIDE COVER



NOTES: (UNLESS OTHERWISE SPECIFIED)

 JBL PROFESSIONAL A Harman International Company Northridge, California 91329 U.S.A.			
TITLE CUSTOMER DWG VLA-C2100			
SIZE A	DRAWING NO. 1000322286	REV A	
SCALE NTS	SHEET 2	OF 3	

4

3

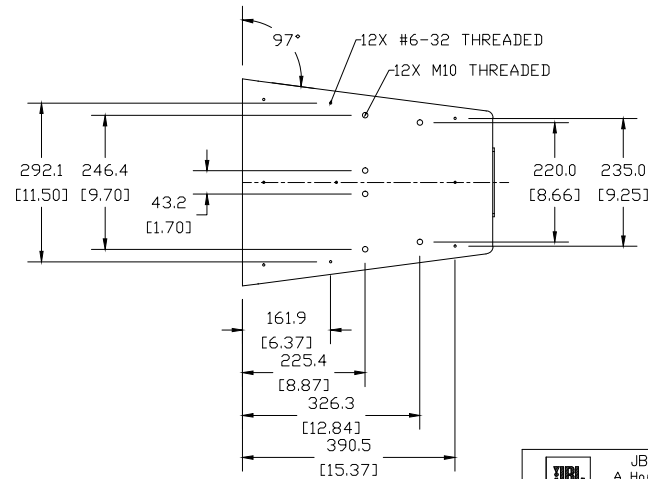
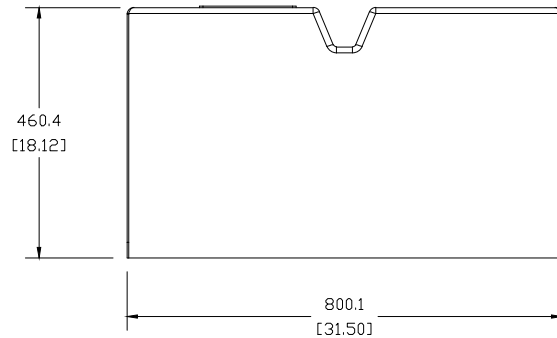
2

1

THESE DRAWINGS AND SPECIFICATIONS ARE THE PROPERTY OF JBL INCORPORATED.
THEY ARE ISSUED IN STRICT CONFIDENCE AND SHALL NOT BE REPRODUCED OR USED
AS THE BASIS FOR MANUFACTURE OR APPARATUS WITHOUT WRITTEN PERMISSION.

REVISIONS						
CHG	LTR	DESCRIPTION	DRPT	D.C	DATE	APPR
	A	RELEASE TO MARKETING	A			

SHOWN WITHOUT SIDE BRACKET & COVER



NOTES: (UNLESS OTHERWISE SPECIFIED)

JBL JBL PROFESSIONAL A Harman International Company Northridge, California 91329 U.S.A.			
TITLE CUSTOMER DWG VLA-C2100			
SIZE A	DRAWING NO. 1000322286	REV A	
SCALE NTS		SHEET 3	OF 3

4

3

2

1